

VACCINATION CENTRE FAQs

The Kuala Lumpur Convention Centre is one of the vaccination centres in Kuala Lumpur as assigned by the Ministry of Science, Technology and Innovation and is providing space and logistical support to aid the Covid-19 Immunization program.

For any questions pertaining to the vaccine, the vaccination process and your appointment, please refer to the following:

Ministry of Health (MOH) Covid-19 website: <http://covid-19.moh.gov.my/>

Tel: +603-8881 0200 / 0600 / 0700

Email: cprc@moh.gov.my

REMINDER

Please bring:

- A pen
- Your Identity Card or passport for non-Malaysian
- Proof of appointment in your MySejahtera application (on your mobile phone).

Please come 15 to 30 minute before your appointed time.

1. What type of vaccine will be administered?

The Centre is just providing the space and logistical support. Please contact MOH to regarding this question.

2. What are the hours of operation for Vaccination Centre (VC) at the Centre?

The vaccination centre is open from 8am to 9pm, seven days a week.

3. How do I get to the Centre?

- You may either drive or take the public transport to the Centre. If you're driving, you may access the Centre via Jalan Pinang.
- If you're taking e-hailing rides, you may be dropped off at Jalan Pinang
- If taking the LRT to Suria KLCC, you may access the tunnel walkway nearby Maybank, walk straight and follow the signages provided to the Centre's Main Entrance.

3. Is the KLCC-Bukit Bintang walkway open?

The link bridge is open from 6 am to 10 pm.

4. How do I enter the Vaccination Centre (VC)?

- Car drop-off will be on one lane of Jalan Pinang but no stopping.
- Pedestrians may access the VC from the main entrance of the Centre on Jalan Pinang.
- Physically Challenged (OKU) persons can be dropped at the main entrance on Jalan Pinang but no stopping (*refer to pictorial guide below*)

5. Do I have to have MySejahtera to enter the Centre?

Yes, all persons must follow the existing SOPs of MySejahtera.

6. Are there any other entry requirements (i.e. temperature scans, etc.)?

All persons are to present their MySejahtera appointment details to enter the Centre and are required to wear masks and practice physical distancing and to maintain all safe practices throughout their time at the vaccination centre.

7. Is there parking available at or near the Centre?

Yes, there are multiple parking options around the Centre. Refer to the map below.

8. Is there valet parking?

No, all driving persons shall park at the designated car parks. Please refer to the map below.

9. Where should I go for vaccination at the Centre?

Please refer to below:

Selamat Datang! Welcome!



Hall 4 & 5 **Holding Area**
Tempat Menunggu

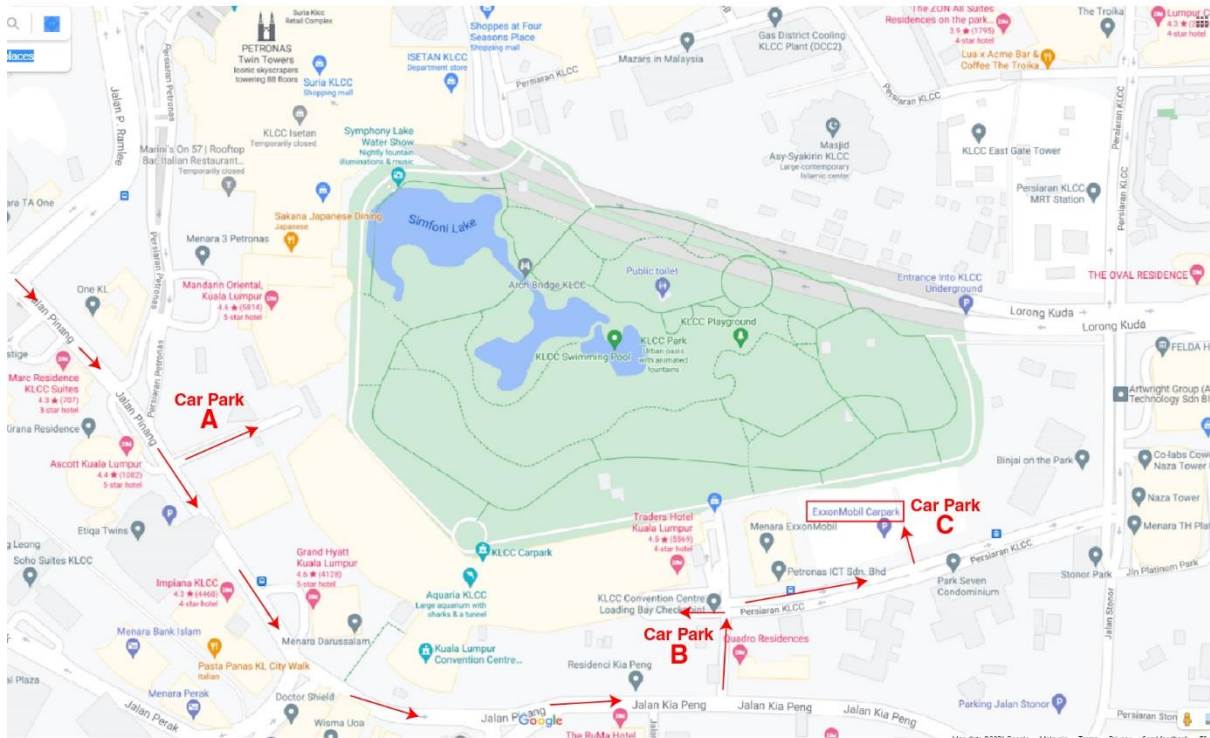
Hall 2 **Registration & Consultation**
Pendaftaran & Konsultasi

Hall 1 **Vaccination & Observation**
Vaksinasi & Pemantauan

LINDUNG DIRI, LINDUNG SEMUA.

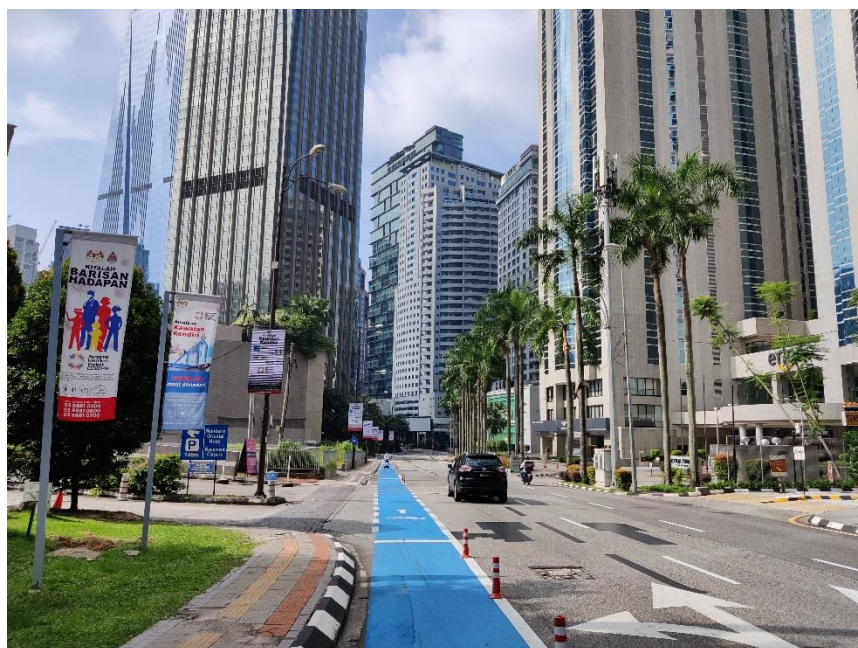
VAKSINCOVID.GOV.MY

Where To Park

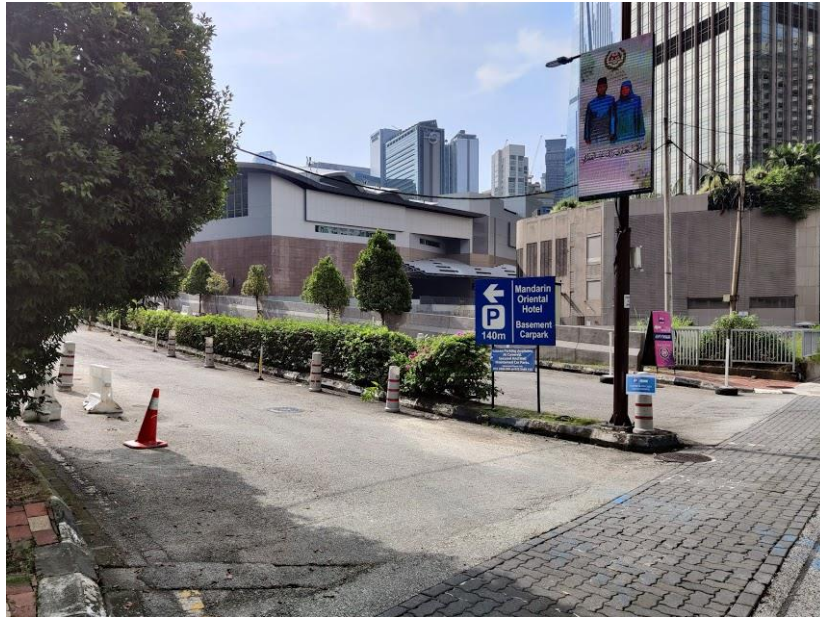


Car Park	Location	Rate
A	Open air car park beside Mandarin Oriental Hotel	Flat rate RM5
B	Kuala Lumpur Convention Centre car park (beside Traders Hotel at Persiaran KLCC)	RM9 flat rate Hourly Rate: RM5 (1 st hour) RM4 (2 nd hour onwards)
C	Exxon Mobil open air car park	Flat rate: RM 4

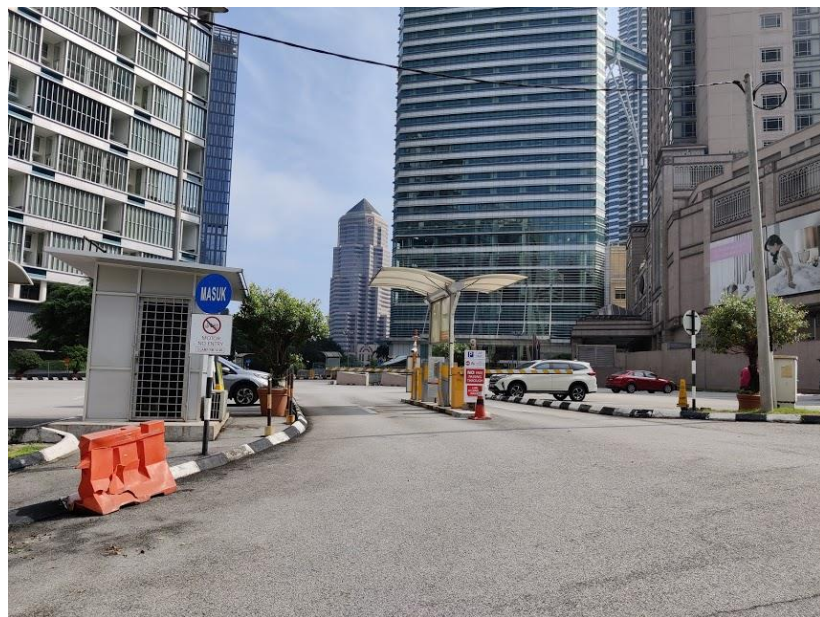
Getting to Car Park A (open air car park next to Mandarin Oriental Hotel) and Way to PPV Kuala Lumpur Convention Centre from Car Park A



Jalan Pinang



Turn left into car park entry road



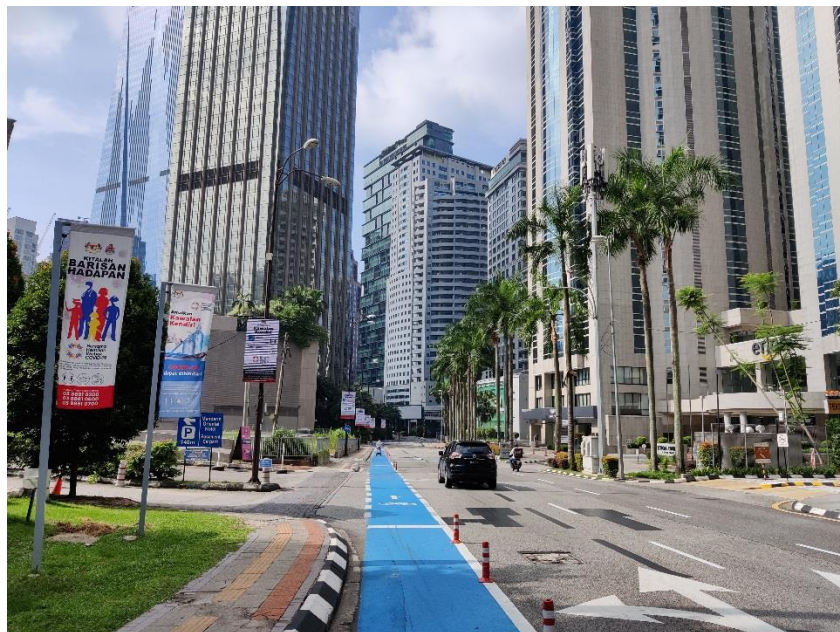
Then turn left to open air car park beside Mandarin Oriental Hotel (Car Park A)



Walk to Kuala Lumpur Convention Centre entrance

Getting to Car Park C (*Exxon Mobil open air car park*) and Centre's Car Park Entrance

Way to PPV Kuala Lumpur Convention Centre from Car Park C



If you are on Jalan Pinang, go past Kuala Lumpur Convention Centre



Take 1st left turn to Persiaran KLCC



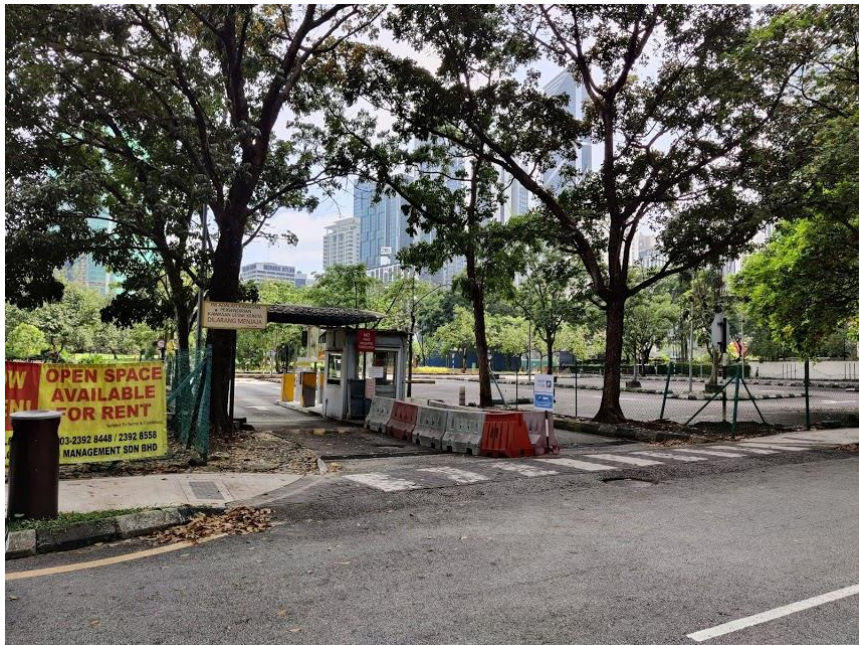
At Traffic lights, turn right to Persiaran KLCC to
Exxon Mobil open air car park (car park C)

***NOTE: Turn LEFT is to entrance to
Kuala Lumpur Convention Centre car park entrance***



Go further up to Exxon Mobil open air car park entrance

NOTE: BE CAREFUL!
The 1st LEFT TURN is the car park EXIT
Please take the 2nd LEFT TURN to car park ENTRANCE



Exxon Mobil open air car park entrance



Exxon Mobil open air car park entrance



Walk towards Centre



Walk to Kuala Lumpur Convention Centre entrance to enter Exhibition Hall 5

WHEEL CHAIR / OKU ACCESS AND DROP OFF



Turn left at Jalan Pinang to Kuala Lumpur Convention Centre main entrance & follow direction to loading bay 2 to enter exhibition hall 2



Drop off at loading bay 2 to enter Exhibition Hall 2

6 June 2021